

CARBON FIBRE ADAPTER

ADAPTER for the optimal bridging of print formats ...

... on the basis of the well-proven POLYWEST technology with
high performance carbon fibre layers or tubes

... worldwide successful in almost all kind of flexo presses

PRODUCT PROPERTIES

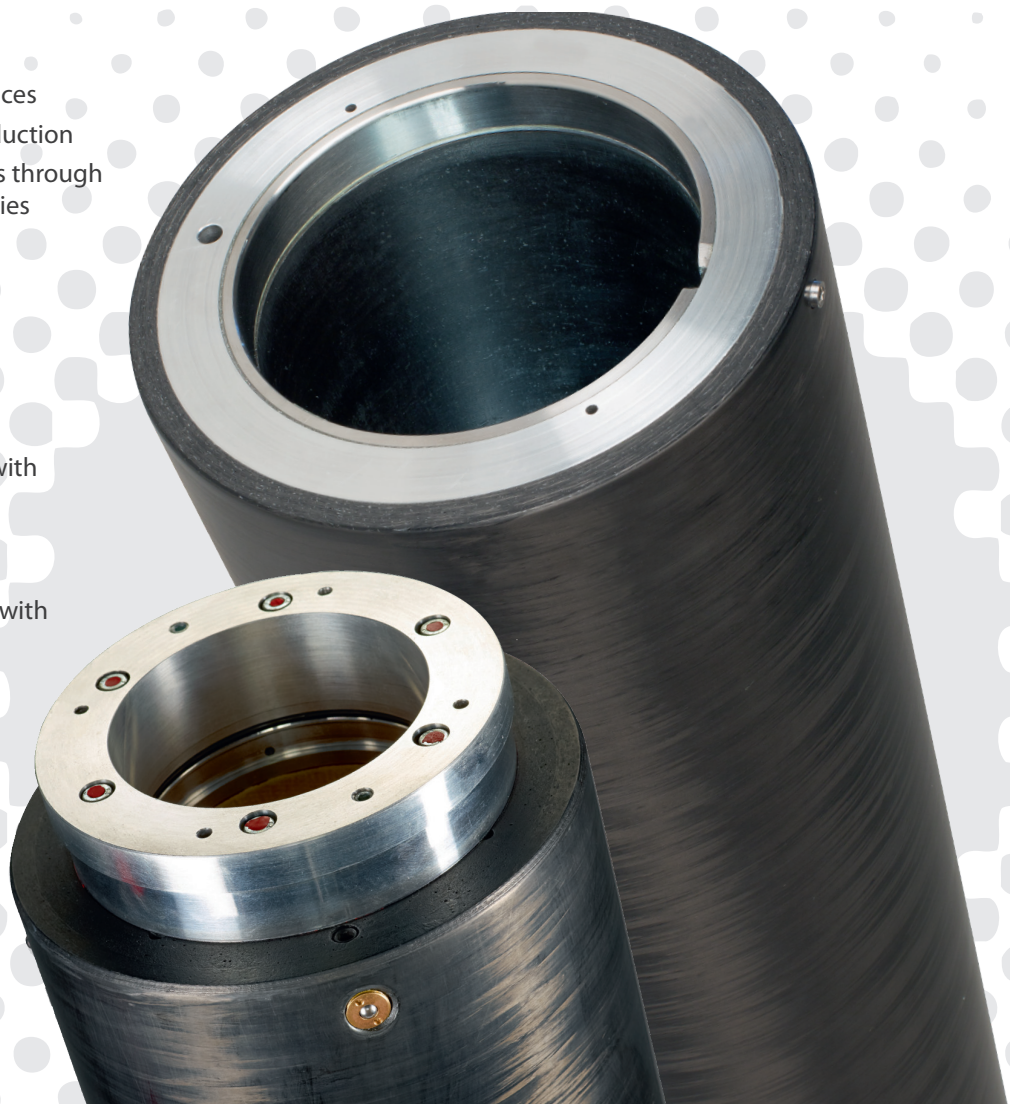
- The requirements of printing are assured through stable build up, hollow chamber and/or high module carbon fibre tubes
- All kind of adapters guarantee low-wear operation with high quality carbon fibre surface on top

ADVANTAGE OF CARBON FIBRE ADAPTERS:

- High printing speeds up to 600 m/min.
- Smooth running characteristics through vibration dampening
- Excellent fatigue strength
- Low thermal expansion
- Bridging of larger print circumferences
- Easier handling through weight reduction
- Improvement of the printing results through the material based positive properties
- Reduction of investment costs
- On request with handle ring for adapter removal
- Ball valves available on request

ADAPTER TYPES

- Standard adapter: Stable build up with carbon fibre functional surface
- CFA: Hollow chamber build up with high stable carbon fibre tube
- HM-CFA: Hollow chamber build up with high module carbon fibre tube
- Custom-made adapters:
e.g. Laser- or Mounting adapter on special request



CARBON FIBRE ADAPTER

PRODUCT DESCRIPTION

PRODUCT PROPERTIES	PRODUCT DESCRIPTION
Product	Carbon Fibre Adapter (CFA)
Printing method	Flexo printing
Application	Available for all market-based repeat length- and plate mounting sleeves
Air Cylinder	
- Diameter Adapter	60,595 mm up to max. 595,105 mm
- STORK-Type	210 up to 1890
Dimensions	
- Print width (Adapter length)	Min. 300 mm up to 2835 mm
- Format length	Up to 1979 mm
- Wall thickness	10 mm up to 150 mm
Construction	Stable construction out of GFRP (glass fibre reinforced plastic) and CFRP (carbon fibre reinforced plastic) with high module CF tube (depending on wall thickness) The specific design of an adapter is in compliance with safety regulations
Ends	Both ends protected with aluminium or stainless steel rings or plates (depends on wall thickness and request)
Surface	High CFRP with the specific character of tensile strength and high elastic modulus for modern industrial applications
Printing inks	Waterbased inks, UV-inks and solvent based inks
Air supply and piping system	Different supply system: - Via air cylinder or with separate connection - Guided air supply via internal piping system
Supply of compressed air	Compressed air with pressure $p = 6$ up to 8 bar (87 up to 116 psi) in combination with minimum airflow of $V = 12$ l/sec (0.4236 – 0.5649 cubic/ftlsec) via air pipe with minimum diameter D inside = 10 mm
Interlock of air cylinder	Bayonet interlock (based on design with notch)
Technical description	
- External diameter tolerance	0 up to + 0,015 mm
- Weight	The application of CFRP in combination with a hollow chamber system provides measurable weight reduction
- Length tolerance	DIN ISO 2768 T1 m
- Form and position variance	DIN ISO 2768-mk
- Run-out tolerance	Max. 0,02 mm measured on air cylinder with TIR of 0,005 mm
- Material	High CFRP with the specific character of tensile strength and high elastic modulus for modern industrial applications
- Dielectric permittivity	Carbon Fibre Adapter are always conductive and fulfil the guide lines 94/97EG (ATEX95)
- Surface cleaning	Resistant against common cleaner
Heat resistance	From 0 up to 50 degree Celsius by designated use
Safety regulation	For safety reasons it is only allowed to make changes by POLYWEST
Storage / Transport	Upright standing, secured against toppling over Transport only in wooden boxes in horizontal position Avoiding of impact by frost and overheating

Technical changes and errors excepted. All information in this document is based on our knowledge and experience at the time of the publication of this document. This document does not constitute a legally binding warranty or assurance regarding the different components of our products or suitability for certain applications. Due to the numerous factors which affect the treatment and the use of our products, testing and adjusting our products are incumbent on the user. POLYWEST does not assume any responsibility for compliance with statutory regulations (in particular intellectual property rights and copyright) when using our products. Product names which are branded with * are protected marks of POLYWEST.